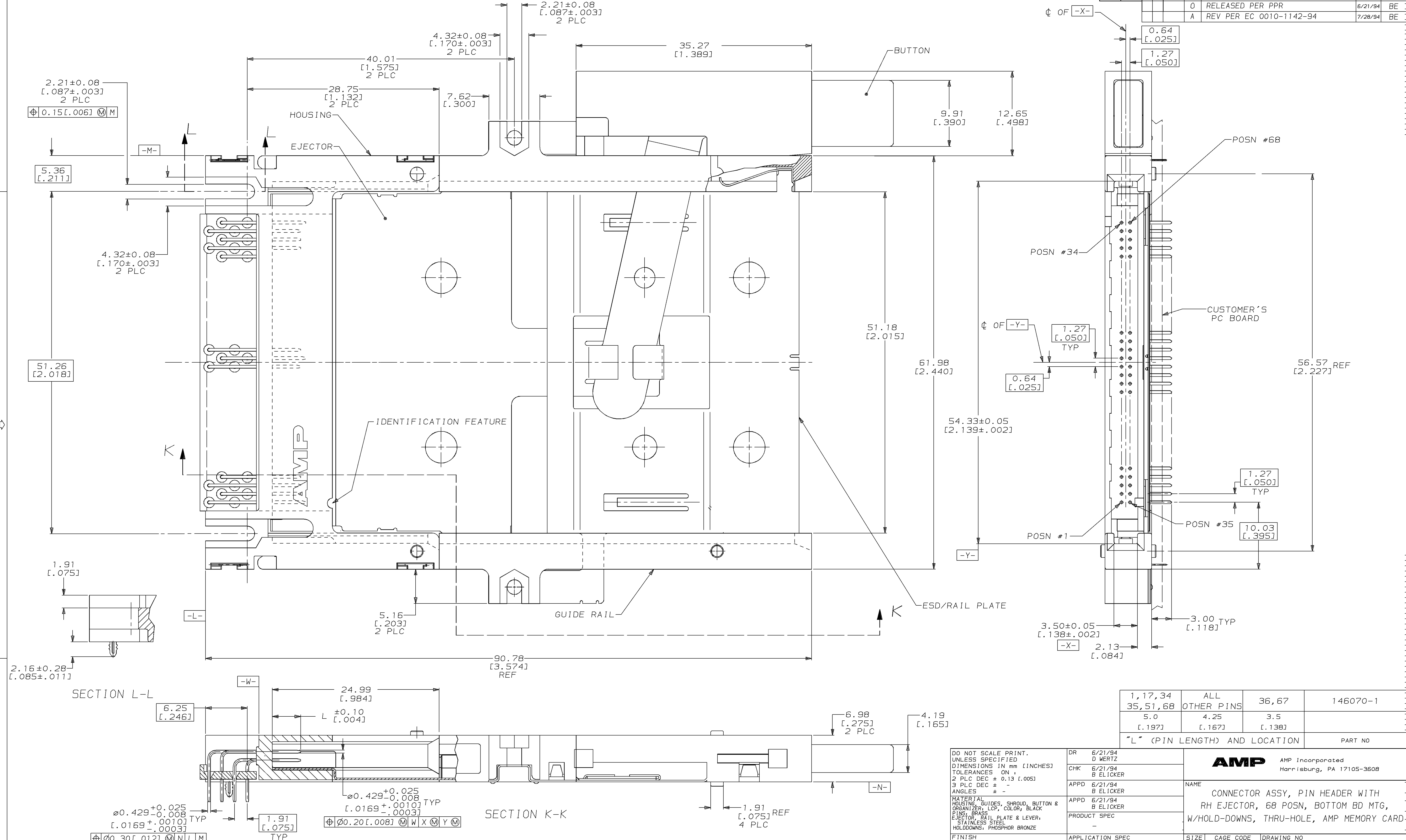


LOC		DIST		P		ZONE		LTR		REVISIONS		
AD	39									DESCRIPTION	DATE	APPD
										0 RELEASED PER PPR	6/21/94	BE
										A REV PER EC 0010-1142-94	7/28/94	BE

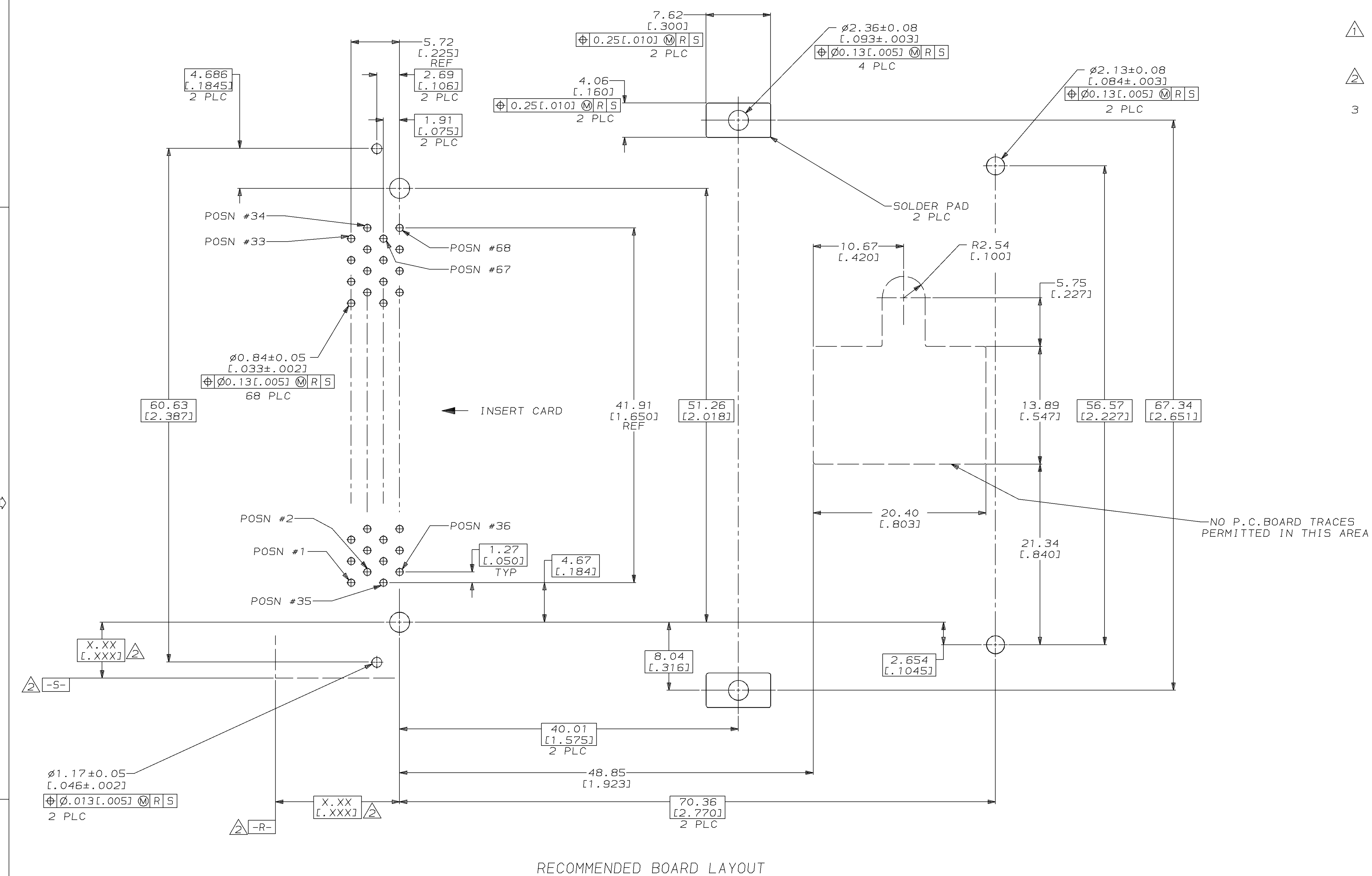


1, 17, 34		ALL		36, 67		146070-1	
35, 51, 68		OTHER PINS					
5.0		4.25		3.5			
[.197]		[.167]		[.138]			
"L" (PIN LENGTH) AND LOCATION						PART NO	

DO NOT SCALE PRINT. UNLESS SPECIFIED DIMENSIONS IN mm [INCHES] TOLERANCES ON: 2 PLC DEC ± 0.13 [.005] 3 PLC DEC ± - ANGLES ± -	DR 6/21/94 D WERTZ	<b>AMP</b> AMP Incorporated Harrisburg, PA 17105-3608
MATERIAL HOUSING, GUIDES, SHROUD, BUTTON & ORGANIZER: LCP, COLOR, BLACK PINS: BRASS EJECTOR, RAIL PLATE & LEVER: STAINLESS STEEL HOLD-DOWNS: PHOSPHOR BRONZE	CHK 6/21/94 B ELICKER	
FINISH HOLD-DOWNS: TIN	APPD 6/21/94 B ELICKER	NAME CONNECTOR ASSY, PIN HEADER WITH RH EJECTOR, 68 POSN, BOTTOM BD MTG, W/HOLD-DOWNS, THRU-HOLE, AMP MEMORY CARD
PIN: $\Delta$	PRODUCT SPEC -	SIZE D 00779
	APPLICATION SPEC -	CAGE CODE C=146070
	WEIGHT 24.4 GRAMS	DRAWING NO C=146070
		SCALE 4:1
		SHEET 1 OF 2

THIS DRAWING IS A CONTROLLED DOCUMENT FOR AMP INCORPORATED. IT IS SUBJECT TO CHANGE AND THE CONTROLLING ENGINEERING ORGANIZATION SHOULD BE CONTACTED FOR THE LATEST REVISION.

LOC		DIST		P		F		ZONE		LTR		REVISIONS			
AD	39											DESCRIPTION	DATE	APPD	
												A	SEE SHEET ONE	-	-



- 1 0.00076 [0.00030] MINIMUM GOLD IN CONTACT AREA, 0.00381 [0.00150] MIN TIN-LEAD ON SOLDER TAILS, ALL OVER 0.00127 [0.00050] MINIMUM NICKEL
- 2 DATUMS AND BASIC DIMENSIONS ESTABLISHED BY CUSTOMER
- 3 CONNECTOR REQUIRES USE OF 4 - SIZE 2M SCREWS FOR FASTENING TO PRINTED CIRCUIT BOARD

DO NOT SCALE PRINT. UNLESS SPECIFIED DIMENSIONS IN mm [INCHES] TOLERANCES ON:		DR		CHK		APPD		FINISH		MATERIAL		APPLICATION SPEC		WEIGHT		PART NO	
2 PLC DEC	± 0.13 [0.005]	6/21/94	D WERTZ	6/21/94	B ELICKER	6/21/94	B ELICKER	-	-	-	-	-	-	-	-	AMP Incorporated Harrisburg, PA 17105-3608	
3 PLC DEC	± -	NAME		CONNECTOR ASSY, PIN HEADER WITH RH EJECTOR, 68 POSN, BOTTOM BD MTG, THRU-HOLE, AMP MEMORY CARD		SIZE		CAGE CODE		DRAWING NO		SCALE		SHEET		20F2	
ANGLES	± -	D		00779		C=146070		4:1									

THIS DRAWING IS A CONTROLLED DOCUMENT FOR AMP INCORPORATED. IT IS SUBJECT TO CHANGE AND THE CONTROLLING ENGINEERING ORGANIZATION SHOULD BE CONTACTED FOR THE LATEST REVISION.